

# Sos Subspecialties Groups



## Saudi Glaucoma Group مجموعة الجلوكوما السعودية



Dr. Ali Al-Beshri

General secretary  
GLUACOMA CONSULTANT KKESH



Dr. Sami Al-Shahwan, Co–Chair

Senior Academic Consultant Director of Fellowship  
& Residency Training Department KKESH, Riyadh



Dr. Ohoud Owaidhah, Chair

Senior Consultant, Glaucoma Division, Adjunct Associate Professor,  
AlFaisal University Chair of the joint residency training program in first  
sector, Riyadh Chair of IRB Committee, King Khaled Eye Specialist  
Hospital Member of Glaucoma Editorial Board of EyeWiki



@SaudiGlaucoma

# المجموعة السعودية لالتهابات العنبية Saudi Uveitis Group



Prof. Abdullah Al-Fawaz  
General Secretary

Chairman, Department of Ophthalmology  
Professor of Ophthalmology King Saud University



Dr Maan Al-Barry, Co-Chair

Consultant, Cornea, Cataract, Refractive & Uveitis  
Taibah University AlMadina Munawara

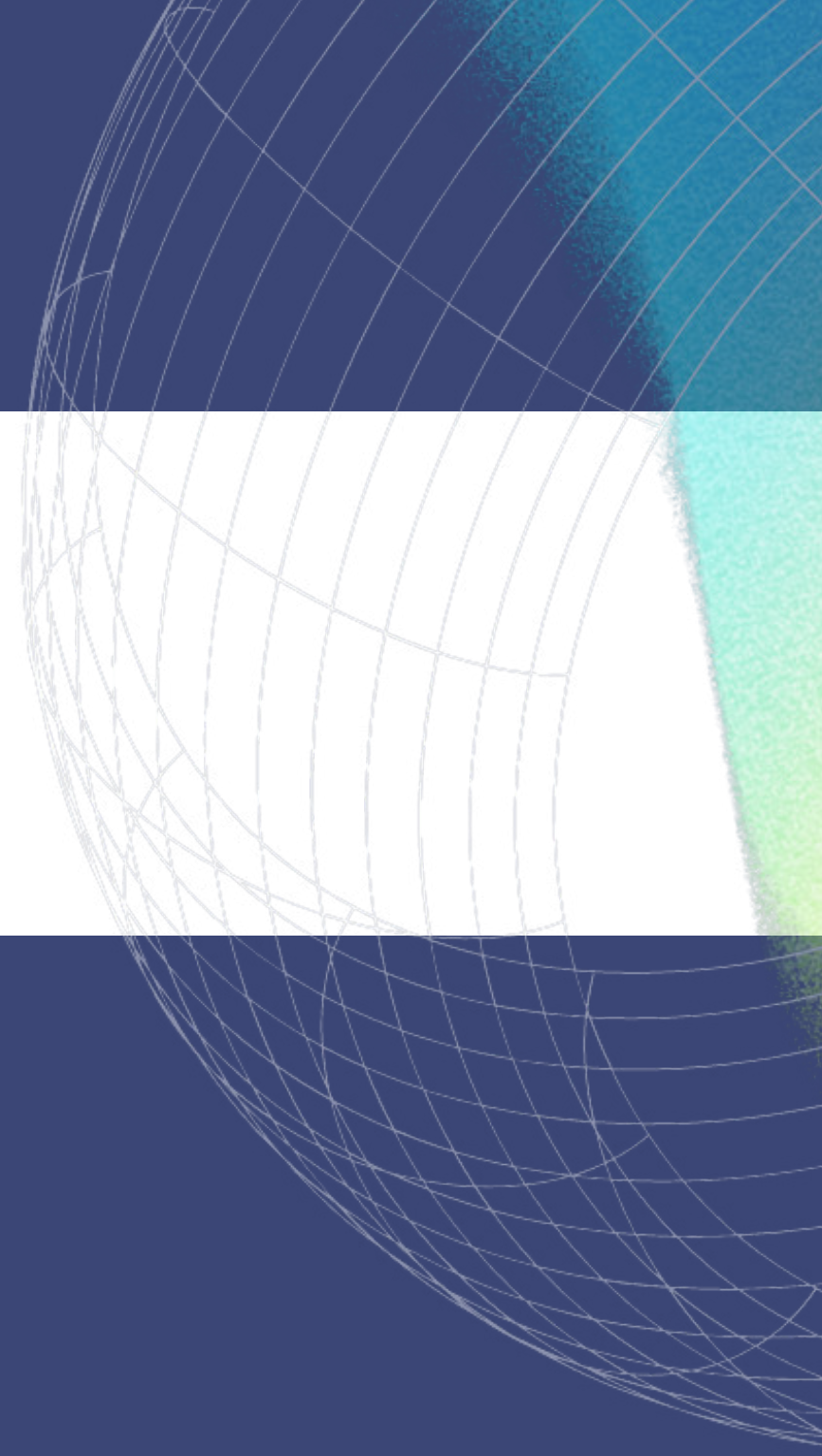


Prof Hassan AlDhibi  
Chair, Saudi Uveitis Group

Senior Academic Consultant Chair, Uveitis Services  
Director, Outreach and Eligibility Department  
KKESH, Riyadh



# مجموعة الشبكية السعودية Saudi Retina Group







**Dr. Mohammad Al-Hazzazi**  
General Secretary , SRG

Assistant Professor College of Medicine KSAU  
& HS Vitreoretinal Consultant King Abdulaziz  
Medical City, Riyadh



**Dr. Abdullah Al-Qahtani**  
Co-Chair, Saudi Retina Group

Consultant, Cornea, Cataract, Refractive & Uveitis  
Chairman, Department of Ophthalmology Assistant  
Professor Consultant Retinal Surgeon King Abdulaziz  
Medical City Jeddah , AlMadina Munawara



**Prof Hassan AlDhibi**  
Chair, Saudi Uveitis Group

Senior Academic Consultant Chair, Uveitis Services  
Director, Outreach and Eligibility Department  
KKESH, Riyadh

**FOLLOW US**

@Saudiretinagr



## Saudi Group of Cornea & Refractive Surgery

المجموعة السعودية للقرنية والماء الأبيض وعمليات تصحيح الإبصار



**Dr. Safaa Beheiri**

General Secretary Ophthalmic Consultant



**Dr. Khaled Alarfaj, Co-Chair**

Consultant, Cornea, Cataract & Refractive Surgery



**Dr Maan Al-Barry, Chair**

Consultant, Cornea, Cataract, Refractive & Uveitis  
Taibah University , AlMadina Munawara





## Saudi Group Of Pediatric ophthalmology and strabismus

المجموعة السعودية لطب عيون الأطفال والحول





**D. Abdullah Al-Owaid**

Pediatric Ophthalmology Consultant, King Fahd University  
Hospital, Imam Abdulrahman bin Faisal University  
General Secretary



**Dr. Laila Hassanin Jeddawi, Co-Chair**

Consultant pediatric ophthalmology and strabismus  
Dr. Suliman al Habib hospital - al khobar



**Dr. Amal Alhemidan, Chair**

Consultant pediatric ophthalmology and  
strabismus Prince sultan medical military city  
And AlRayan hospital/Habib medical group  
Riyadh /Saudi Arabia



**@walhwl**



المجموعة السعودية للجراحات  
التجميلية ومحجر العين  
Saudi Oculoplastic and Orbit Group





Dr. Mohammed Al-Sammari

General Secretary Ophthalmic  
Consultant, KKESH



Adel AlSuhaibani, Co-Chair

Professor, Consultant Unit Head, Oculoplastic King  
Saud University , Riyadh



Dr. Hailah Al Hussain, Chair

Senior Academic Consultant, Chief,  
Oculoplastic Division, KKESH



المجموعة السعودية  
لأورام وعلم أمراض العين  
**Saudi Ocular Oncology  
And Pathology Group**





Dr. Azza Maktabi

General Secretary Ophthalmic  
Consultant, KKESH



Prof. Hind Al-Katan Co-Chair

Senior Academic Consultant, KSU  
Editorial Board Member, SJO



Dr. Saleh Al-Mesfer, Chair

Senior Academic Consultant, KKESH



@SaudiOOG



# المجموعة السعودية لأطباء العيون الشباب

Saudi Group of Young  
Ophthalmologists



Dr. Sami Al-Shahwan, Chair

Senior Ophthalmic Consultant,  
KKESH Chair



SaudiOphtha



[www.sos.org.sa](http://www.sos.org.sa)



[sos@sos.org.sa](mailto:sos@sos.org.sa)

